

**Acrylic  
coatings  
for facade**

Colour Chart



## GECOL Revestcrl:

- Acrylic coating for the protection, decoration and renovation of facades.
- Fungicidal (anti-mould) and bactericidal effect.
- Textures: floated, trowelled, stippled, flattened drop, and smooth.
- Suitable for ETICS systems.



Rule EN **ETA 12/0408**

## GECOL Revestcrl fotocatalítico:

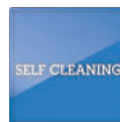
- Self-cleaning acrylic coating, highly waterproofed, for the protection, decoration and renovation of facades.
- Fungicidal (anti-mould) and bactericidal effect.
- Textured texture.



Rule EN **ETA 12/0408**

## GECOL Revestcrl siloxánico:

- Acrylic coating for the protection, decoration and renovation of facades.
- Fungicidal (anti-mould) and bactericidal effect.
- Textured floated.
- Suitable for ETICS systems.



Rule EN **ETA 12/0408**

## GECOL Revestcrl elastic:

- Acrylic coating for the protection, decoration and renovation of facades.
- Fungicidal (anti-mould) and bactericidal effect.
- Textures: striped.

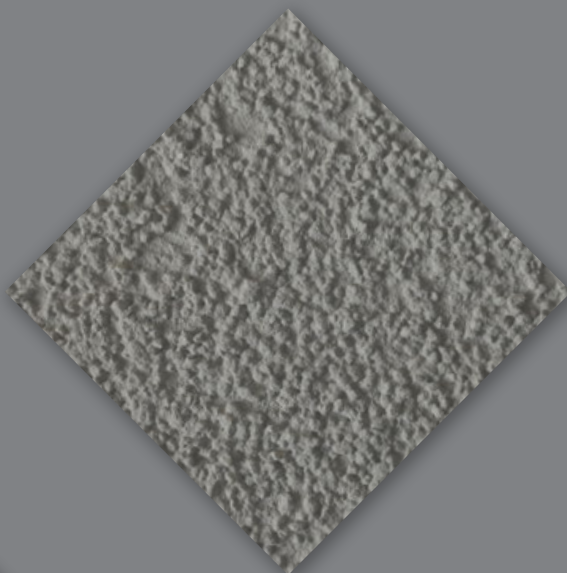


Rule EN **ETA 12/0408**

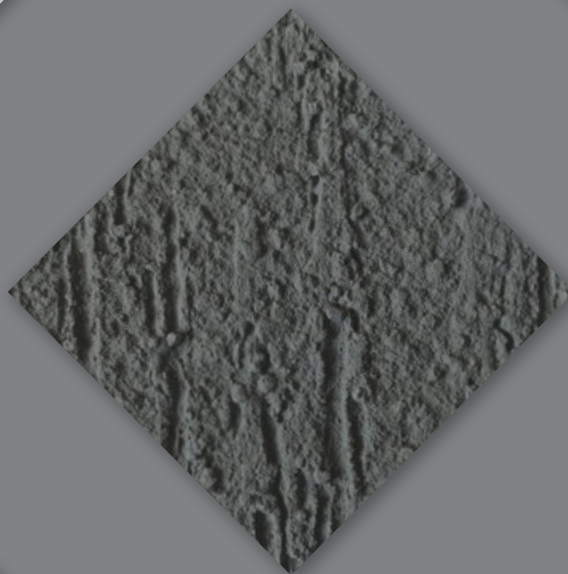
# Textures and finishes



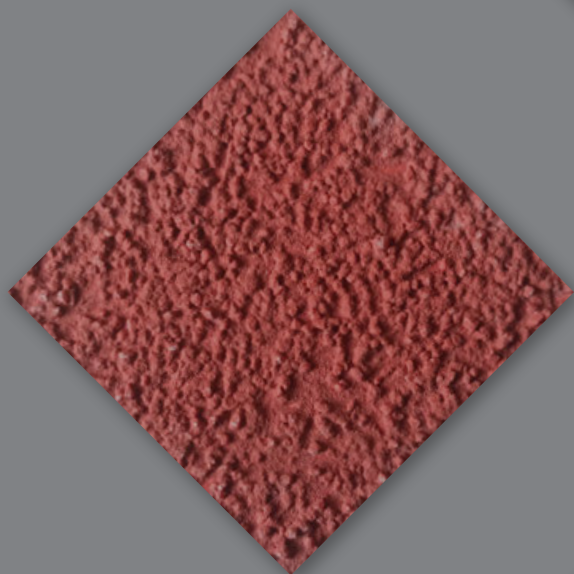
Smooth



Floated



Lined



Siloxánico



Fotocatalítico



Elastic

**Warning:** due to the process of viewing this document, the colors shown in the chart are indicative of the final color once the product is applied.

The colors exhibited in this sample can suffer small variations in color or texture depending on the conditions in which the product is applied (mixing water, drying temperature, support conditions, different thicknesses of monolayer, etc.)



# Colour chart



**Warning:** due to the process of viewing this document, the colors shown in the chart are indicative of the final color once the product is applied.

The colors exhibited in this sample can suffer small variations in color or texture depending on the conditions in which the product is applied (mixing water, drying temperature, support conditions, different thicknesses of monolayer, etc.)



# Colour chart



**Warning:** due to the process of viewing this document, the colors shown in the chart are indicative of the final color once the product is applied.

The colors exhibited in this sample can suffer small variations in color or texture depending on the conditions in which the product is applied (mixing water, drying temperature, support conditions, different thicknesses of monolayer, etc.)





[www.gecol.com](http://www.gecol.com)

[info@gecol.com](mailto:info@gecol.com)

[@GECOLoficial](https://www.instagram.com/GECOLoficial)

